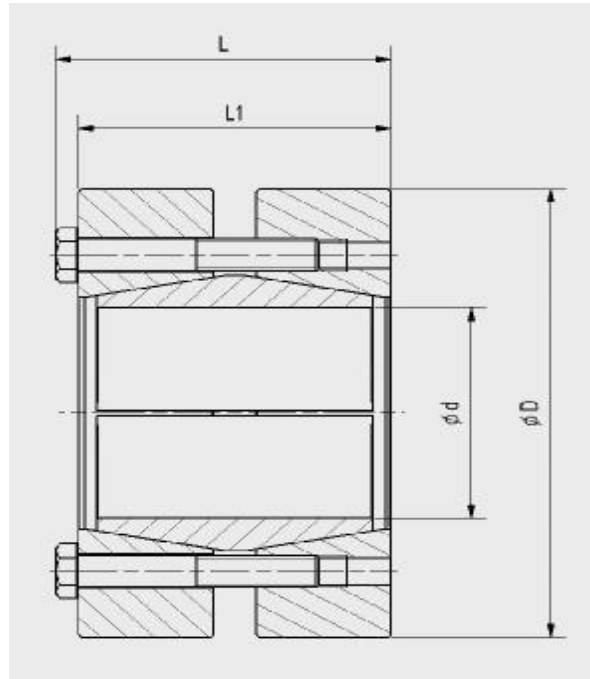


## Rigid coupling MAV 1204

rev. 2

### Features:

- shaft-to-shaft rigid connection
- high torque capacity
- possible connection of different shaft sizes
- 3-part design
- shaft surface finish  $Ra < 3,2 \mu m$
- shaft tolerance: h7 – h9
- screws DIN 931/933 grade 10.9



Ma: screw tightening torque  
 Mt: max. transmissible torque ( $Fax=0$  kN)  
 Fax: max. transmissible axial load ( $Mt=0$ Nm)  
 Ps: contact pressure on shaft

### Example of order: MAV1204 – 50 x 112

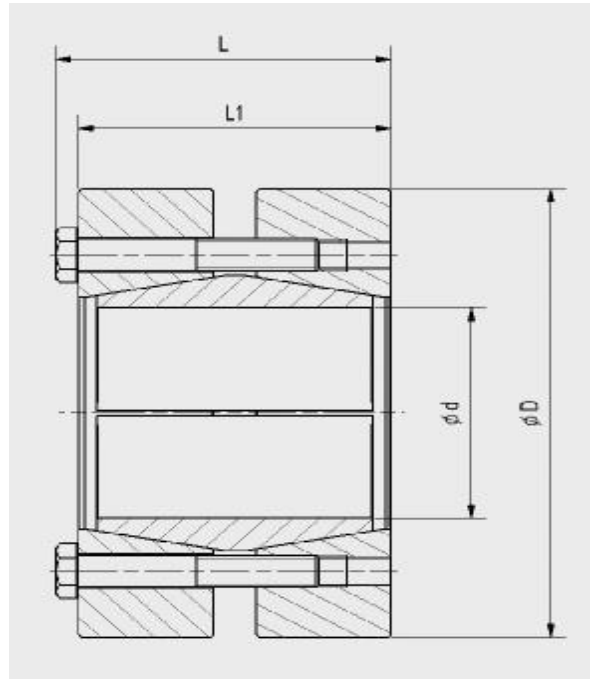
Dimensions				Screws		Performance			Weight
d	x D	L	L1	size	Ma	Mt	Fax	Ps	
mm	mm	mm	mm		Nm	Nm	kN	N/mm <sup>2</sup>	kg
6	x 35	22,5	19	M 5	4	27	9	491	0,11
7	x 35	22,5	19	M 5	4	31	9	421	0,11
8	x 35	22,5	19	M 5	4	36	9	368	0,11
9	x 39	26,5	23	M 5	4	50	11	327	0,17
10	x 39	26,5	23	M 5	4	55	11	294	0,17
11	x 39	26,5	23	M 5	4	61	11	268	0,17
12	x 44	33,5	30	M 5	4	80	13	226	0,29
13	x 44	33,5	30	M 5	4	87	13	209	0,29
14	x 44	33,5	30	M 5	4	93	13	194	0,28
15	x 52	38,0	34	M 6	12	160	22	275	0,43
16	x 52	38,0	34	M 6	12	170	22	258	0,43
17	x 52	38,0	34	M 6	12	180	22	242	0,42
18	x 52	38,0	34	M 6	12	200	22	229	0,42
19	x 52	38,0	34	M 6	12	210	22	217	0,41
20	x 60	44,0	40	M 6	12	360	36	301	0,65
22	x 60	44,0	40	M 6	12	400	36	273	0,63
24	x 60	44,0	40	M 6	12	440	36	250	0,61
25	x 66	48,0	44	M 6	12	630	51	299	0,84

## Rigid coupling MAV 1204

rev. 2

### Features:

- shaft-to-shaft rigid connection
- high torque capacity
- possible connection of different shaft sizes
- 3-part design
- shaft surface finish  $R_a < 3,2 \mu\text{m}$
- shaft tolerance: h7 – h9
- screws DIN 931/933 grade 10.9



Ma: screw tightening torque  
 Mt: max. transmissible torque ( $F_{ax}=0 \text{ kN}$ )  
 Fax: max. transmissible axial load ( $M_t=0 \text{ Nm}$ )  
 Ps: contact pressure on shaft

### Example of order: MAV1204 – 50 x 112

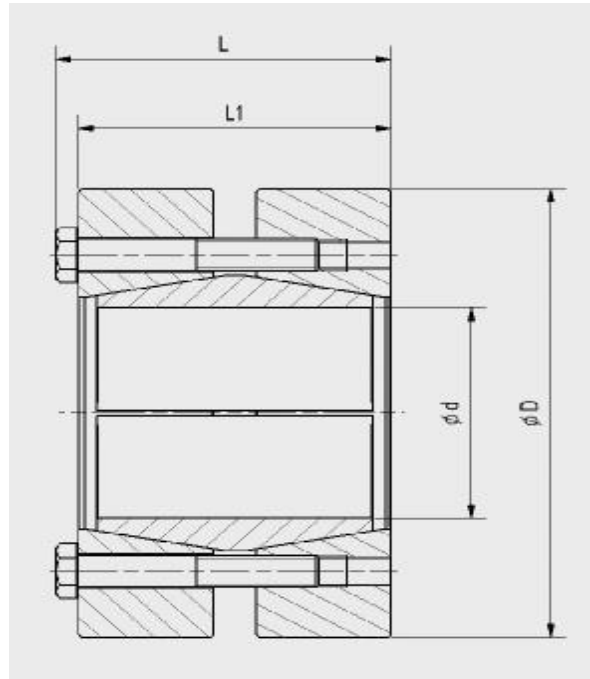
Dimensions		Screws		Performance			Weight		
d	x D	L	L1	size	Ma	Mt	Fax	Ps	
mm	mm	mm	mm		Nm	Nm	kN	N/mm <sup>2</sup>	kg
28	x 66	48,0	44	M 6	12	710	51	267	0,80
29	x 66	48,0	44	M 6	12	740	51	258	0,79
30	x 76	52,0	48	M 6	12	870	58	256	1,2
32	x 76	52,0	48	M 6	12	930	58	240	1,2
35	x 76	52,0	48	M 6	12	1.000	58	220	1,2
36	x 96	61,3	56	M 8	30	1.800	97	312	2,3
40	x 96	61,3	56	M 8	30	1.900	97	281	2,2
44	x 96	61,3	56	M 8	30	2.100	97	256	2,1
50	x 112	73,3	68	M 8	30	3.500	140	264	3,5
51	x 112	73,3	68	M 8	30	3.600	140	259	3,5
54	x 112	73,3	68	M 8	30	3.800	140	244	3,6
55	x 120	83,3	78	M 8	30	4.600	170	244	4,7
60	x 120	83,3	78	M 8	30	5.000	170	224	4,4
63	x 120	83,3	78	M 8	30	5.300	170	213	4,3
65	x 148	94,4	88	M 10	60	8.600	260	284	8,4
68	x 148	94,4	88	M 10	60	9.000	260	272	8,1
70	x 148	94,4	88	M 10	60	9.300	260	264	8,1
73	x 148	94,4	88	M 10	60	9.700	260	253	7,9

## Rigid coupling MAV 1204

rev. 2

### Features:

- shaft-to-shaft rigid connection
- high torque capacity
- possible connection of different shaft sizes
- 3-part design
- shaft surface finish  $Ra < 3,2 \mu m$
- shaft tolerance: h7 – h9
- screws DIN 931/933 grade 10.9



Ma: screw tightening torque  
 Mt: max. transmissible torque ( $F_{ax}=0$  kN)  
 Fax: max. transmissible axial load ( $M_t=0$ Nm)  
 Ps: contact pressure on shaft

### Example of order: MAV1204 – 50 x 112

Dimensions				Screws		Performance			Weight
d	x D	L	L1	size	Ma	Mt	Fax	Ps	
mm	mm	mm	mm		Nm	Nm	kN	N/mm <sup>2</sup>	kg
74	x 170	111,5	104	M 12	100	11.600	310	262	13
76	x 170	111,5	104	M 12	100	12.000	310	256	13
80	x 170	111,5	104	M 12	100	12.600	310	243	12
85	x 170	111,5	104	M 12	100	13.400	310	228	12
86	x 185	123,5	116	M 12	100	16.200	380	238	17
90	x 185	123,5	116	M 12	100	17.000	380	227	16
92	x 185	123,5	116	M 12	100	17.400	380	222	16
96	x 185	123,5	116	M 12	100	18.100	380	213	16
100	x 197	133,5	126	M 12	100	23.600	470	232	20
106	x 197	133,5	126	M 12	100	25.000	470	219	19
108	x 197	133,5	126	M 12	100	25.500	470	215	18
110	x 197	133,5	126	M 12	100	26.000	470	211	18
120	x 230	162,0	152	M 16	250	43.600	730	251	32
130	x 230	162,0	152	M 16	250	47.200	730	231	29

Information subject to change without prior notification. © MAV S.p.A.